

## Comparison of 4 Howard County Hairstreaks

**Gray Hairstreak**



NO white spot at center of top edge of HW  
Big red spot next to HW edge

**White M Hairstreak**



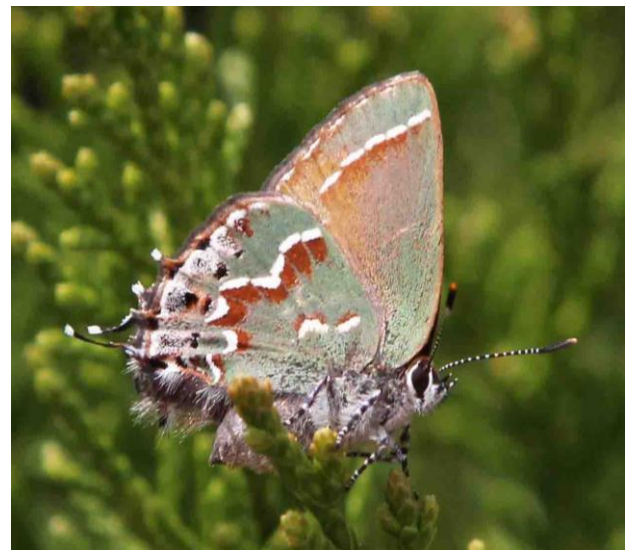
White spot at center of top edge of HW  
Red spot set inward of HW edge

**Red-banded Hairstreak**



Red band on both wings  
Host "plant" is dead leaves!

**Juniper Hairstreak**



Found in red cedars  
(& Mt. Pleasant garden plots!)