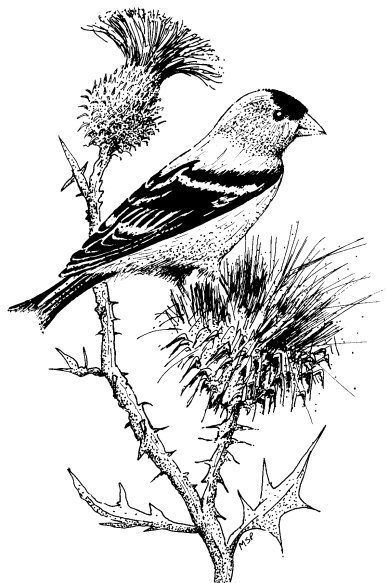


The Goldfinch

Newsletter of the Howard County Bird Club • A Chapter of the Maryland Ornithological Society



Inside This Issue

Club Meetings	1
Summer Bird Records	1
Middleton Evans' Presentation ..	3
Volunteers Needed	3
Fall Count Results	4
Fall Field Trips	6
Holiday Shopping	6
Warblers on a Platter	7
Board of Directors Meetings	7
MOS Scholarships	8

The Goldfinch, newsletter of the Howard County Bird Club, is published five times per year.

Copy deadline for the January/February 2008 issue is November 25, 2007.

Amanda Witt, *Editor*
Joanne Solem, *Proofreader*

Anyone is welcome to contribute articles or ideas which you think will be of interest to other birders.

Copy may be sent to:

Amanda Witt
6134 Starburn Path
Columbia, MD 21045
amanda.witt@yahoo.com

Please visit the Club's website at www.howardbirds.org

CLUB MEETINGS - BY JANE GEUDER

Thursday, November 8, 2007

"Rhapsody in Blue--A Celebration of North American Waterbirds," by Middleton Evans. This local photographer and publisher will share many images and stories of some of the 150+ species he has recorded over five years and 37 major trips on our continent. He will have copies of his recent book available at the meeting.

Thursday, December 13, 2007

"On a Clear Day You See L.A.--Birding Opportunities near Los Angeles Airports," by Jeff and Elayne Metter. Club members and former Angelenos, Jeff and Elayne will help you make the most of the few hours you might have between flights or meetings in Los Angeles.

Howard County Bird Club meetings are held at Howard County Recreation & Parks Headquarters 7120 Oakland Mills Road, Columbia, MD 21046.

If schools are closed for the day or close early due to snow and/or ice, all indoor facilities are closed for the day. You can check on the status of programs and facilities by calling the recorded program status line at 410-313-4451. Hospitality and club bookstore at 7:30 p.m. Meeting/Program begins at 8:00 p.m. For further information call Kevin Heffernan, 410-418-8731.

SUMMER BIRD RECORDS JUNE 1 TO JULY 31, 2007

BY JOANNE SOLEM

The year following the completion of a breeding bird atlas normally sees a drop in summer birding. This year was no exception as many Howard birders took a well-deserved rest. Despite the heat and humidity, there were some notable birds. Highlights of this short season were Northern Bobwhite, Yellow-crowned Night-Heron, White-rumped Sandpiper, Red-headed Woodpecker, Red-

breasted Nuthatch, Prothonotary Warbler, and nesting Savannah Sparrow.

The county's only free-flying **Mute Swan** left Lake Elkhorn 6/21 and flew to Wilde Lake (**SN**). After some wandering, it moved to Centennial after the end of this season (**BO**). The **Wood Duck** box at Schooley Mill Park contained a

(*Records continued on page 2*)

(Records continued from page 1)
 female with 10 eggs on 6/20; unfortunately, the nest was unsuccessful (**WE**). A pair of **American Black Ducks**, infrequent in summer, was seen 6/29 at Race Rd (**SSw**). Lingering migrant waterfowl are always a curiosity. A male **Ring-necked Duck** was spotted 6/6 on Wilde Lake (**SPz**) and another (or the same bird?) was present on a pond at Larriland Farm 7/12 (**WE**). Coincidentally, that pond on the same date also held a **Ruddy Duck** and a **Pied-billed Grebe** (**WE**). All three species have been recorded previously in the summer a minimum of six times, but sighting are irregular and uncommon. A **Pied-billed Grebe** on Triadelphia Reservoir 7/30 was also a fine early date (**B&GHi**).

Northern Bobwhites have become scarce and unpredictable. One found a niche from 6/5 to at least 7/31 in an area northwest of US 40 and Rogers Ave, an unexpected location (**SBg**). **Great Egrets** were reported from Gateway (**JW**), Meadowbrook Park (**JS**), Browns Bridge (**EH**), and Centennial Park (**WEb**). The adult **Yellow-crowned Night-Heron**, reported in May at Lake Elkhorn, reappeared on 6/21 and was seen through the period (**MSt, BMi+**). Especially intriguing was the report on 7/28 of an adult in the company of two first summer birds (**MSt**). An adult **Black-crowned Night-Heron** stopped at Sewell's Orchard Ponds 7/23 (**JMcC**).

The only **Osprey** of the summer was present at Forebay 7/30 (**SN**). An adult **Bald Eagle** was seen at Lake Kittamaquundi 7/6 (**FP**), while an immature was noted at Poplar Springs Park 7/30 (**JCu**). A

Cooper's Hawk nest with nearby fledglings was spotted 7/26 along the Patuxent Branch Trail, just south of Lake Elkhorn (**JMcK**). A hawk's nest with young was reported in a pine tree south of Ellicott City 6/29 (**KJf**). On 7/2 it was identified as belonging to a **Red-shouldered Hawk**—particularly interesting because most of their nests in this county are in deciduous trees (**KS**). Single **American Kestrels** were noted at two locations on 6/14: Md 108/32 and Md 144/Daisy Rd (**WE**).

Shorebirds tended to arrive early. The two **Semipalmated Plovers** at Triadelphia Reservoir 7/21 were the county's second earliest record (**BHi**). Two **Greater Yellowlegs** at Western Regional Park 7/21 established a new fall record (**B&GHi; EH**); one at Big Branch 7/23 was also an early bird (**BHb**). The **Spotted Sandpiper** at Western RP 7/15 tied the county early date (**BHi**); however, the one that appeared at Lake Elkhorn on 7/1, more than two weeks before the mid-July bird, was puzzling (**SN**). Had it attempted to nest locally or was it a migrant? Two **Least Sandpipers** at Western RP 7/13 tied the second earliest date (**BHi**). A **White-rumped Sandpiper** at Western RP 6/3 was an unexpected treat (**TFe**). The two that had been present 5/27-5/30 were not seen after the latter date (**BHi**). It is not possible to rule out the reappearance of one of those two late May birds (after perhaps moving temporarily to another location), but the one on 6/3 was just as likely to be a different bird.

Two **Black-billed Cuckoos** at Sykesville, Patapsco Valley State Park (PVSP) 6/2 could have been

migrants (**FLv**). Swansfield's open space in W. Columbia produced a **Great Horned Owl** 7/2 and an **Eastern Screech-Owl** 7/30 (**JTv**). A Great Horned Owl was calling west of Ellicott City 7/31 (**KHf, KD**). The lone **Red-headed Woodpecker** report on 7/16 was an adult on a Roxbury Rd sunflower feeder—a handsome feeder bird (**BBl**).

Horned Larks are regular at Western RP and were reported 6/3 (1-**TFe**) and 6/22 (3-**KS, MAB**). An adult, accompanied by a juvenile, was spotted near the intersection of Underwood Rd and Old Frederick Rd 6/23 (**JW**). A **Cliff Swallow** over the US 29/Middle Patuxent River bridge was near a historic nesting site (**JW**). The **Red-breasted Nuthatch** that visited sunflower feeders 7/12-7/22 west of Ellicott City was the county's third summer record (**RT**). A **Gray Catbird** at Dunloggin 6/27 varied its diet with suet (**KS**). Four **Blue-winged Warblers** were a nice concentration in the shrublands near Sykesville 6/2 (**FLv+**). A **Black-throated Green Warbler** in Hammond Village 6/2 was the second latest spring departure date (**JS**). Two **Black-and-white Warblers** were present at Daniels, PVSP 6/22 (**JW**). An **American Redstart** was noted at the Dickey Farm on Forsythe Rd 6/5 (**DH**). The only summer **Prothonotary Warbler**, a male, was spotted midday at Race Rd 6/29 (**SSw**).

One of the most exciting summer finds was a **Savannah Sparrow** feeding young 6/30 at the Alpha Ridge Landfill (**RC**). It was not a complete surprise because this year
(Records continued on page 3)

(Records continued from page 2)

three adults had been singing on territory on 6/16. (During atlas data collection years, they had always disappeared by late May.) As disappointing as it was to miss this atlas confirmation (we feel your pain, Ralph), it was still an excellent find as this was just the third county nesting record! **Grasshopper Sparrows** were reported from Western RP from 6/3 (**TFe**) to 7/22 (**KS**); they were also reported from three other locations (**JW**). A late **White-throated Sparrow** appeared at Brush Run, E. Columbia 6/7 (**JW**). **Blue Grosbeaks** were seen at Gateway 6/11 (2-**JW**), at Mt. Pleasant 7/14 (1-**JW**), and at West Friendship Park 7/30 (1-**JCu**). An **Eastern Meadowlark** was at Western RP 7/23 (**BHb**; **BHi**).

Correction: The **Yellow-bellied Flycatcher** on May 12 in the Spring report was seen at Starting Gate, not Western RP (**TFe**).

Observers: **SBg** – Scott Berglund, **MAB** – Mary Ann Beverly, **BBI** – Bill Blum, **JCu** – Jeff Culler, **RC** – Ralph Cullison III, **KD** – Karen Darcy, **WE** – Wes Earp, **WEB** – Ward Ebert, **TFe** – Tom Feild, **DH** – Dave Harvey, **KHf** – Kevin Heffernan, **BHi** – Bill Hill, **GHi** – Gayle Hill, **EH** – Emy Holdridge, **BHb** – Bill Hubick, **KJf** – Karen Jeffries, **FLv** – Felicia Lovelett, **JMcC** – Jenny McClintock, **JMcK** – John McKitterick, **BMi** – Barry Miller, **SN** – Sue Neri, **BO** – Bonnie Ott, **FP** – Fred Pierce, **SPz** – Sherry Peruzzi, **KS** – Kurt Schwarz, **SSw** – Steve Schwemmer, **JS** – Jo Solem, **MSt** – Michelle Stewart, **RT** – Robin Todd, **JTv** – June Tveekrem, **JW** – Jim Wilkinson.

PHOTOGRAPHER MIDDLETON EVANS TO PRESENT RHAPSODY IN BLUE AT HOWARD COMMUNITY COLLEGE

Celebrated Maryland photographer Middleton Evans will present a selection of slides from his new book, *Rhapsody in Blue, A Celebration of North American Waterbirds* (Ravenwood Press, 2007). The presentation will be followed by a discussion period, reception and book-signing. Prior to the presentation, photographs from the book will be displayed at Howard County libraries.

The presentation, sponsored by The James and Anne Robinson Foundation and Howard County Department of Recreation and Parks, will take place in the Kittleman Room in the English, Language, Business building of Howard Community College on Sunday, November 4, 2-4 p.m. Admission is \$12. Proceeds will support the Breeding Bird Atlas project of the Maryland Ornithological Society and the environmental education work of the Robinson Nature Center. Free parking is available in Lot A.

For additional information on the *Rhapsody in Blue* presentation or to register, contact Mary O'Neill 443-733-1203.

About Middleton Evans

Middleton Evans has spent most of his 20-year career documenting the many faces of Maryland. Favorite subjects include Chesapeake Bay watermen, cities and towns, festivals, farm life, and equestrian events. In 2001, Maryland Public Television selected Mr. Evans as one of six local photographers to

be featured in the documentary film *Images of Maryland: 1900 – 2000*, chronicling the state's most distinguished lensmen of the twentieth century. Since 1992 most of his time has been devoted to nature photography, beginning with the 1996 release of *Maryland's Great Outdoors*. Evans has a special passion for birds. In 1998 an extraordinary 10-day Florida bird marathon served as the genesis of *Rhapsody in Blue*, an epic five-year adventure including 37 trips all over North America in search of miraculous encounters with native waterbirds.

About The James and Anne Robinson Foundation

Through its programs and partnerships, the James and Anne Robinson Foundation fosters appreciation for the natural world and environmental stewardship in children and adults in Howard County and beyond. The Foundation supports the work of the Robinson Nature Center as well as other local environmental and watershed initiatives.

VOLUNTEERS NEEDED!

Periodically our club receives requests from other organizations to give birding presentations. The requests usually are from adult groups. If you would be interested in helping design or present a program please contact Kevin Heffernan [(410) 418-8731 or KJHeff@aol.com].

SUMMARY OF THE 2007 HOWARD COUNTY FALL COUNT

BY MIKE MCCLURE AND CHUCK STIRRAT

The fourteenth annual Howard County Fall Count was conducted on Sept. 15th, 2007. All field counters agreed it was a very slow day of birding with a total of 115 species observed making this Fall Count below average. Comparison totals for the prior 13 years are high, 136 on 9/19/1998; low, 108 on 9/18/2004; average, 125 species.

The 48 participants and 33 parties were down from last year's 50 and 38. The totals for party miles and hours are shown on the tally sheet. The participants provided 181 hours of field counting time. The mileage was 354 compared to the average of 379 miles. The total of individual birds tallied to 13,892 which is below the average. Comparisons to prior years: high, 26,651 on 9/17/1994; low, 9,293 on 9/18/2004; average, 17,634 birds. Finally, there were 19 warbler species identified compared to prior years (high, 30; low, 13; average, 24 species) with 237 individual warblers sighted compared to an average of 438.

Fall Count has been adversely af-

ected by the weather on eight occasions (57% of the time). These weather events have ranged from severe drought, to extensive rainfall, to unseasonably hot and humid conditions, to comfortable temperature and humidity accompanied by high winds for the day. Saturday's temperature started in the mid 60s at 6:00 a.m. under full cloud cover, rising to 71 degrees in late afternoon as the overcast broke to clear skies around 2:30 p.m. The humidity was tolerable (dew point: 61 degrees at 6:00 a.m., decreasing to 42 degrees by afternoon). Winds were light in the morning increasing to 6-8 mph for the afternoon and evening. In spite of the weather, the count was very slow with the birds showing up at a very slow rate and frustrating all of the participants. This count appears to have been affected by three factors, two weather-related: drought (~12" below normal rainfall), and wind, plus a missed migration. In fact, the lack of migration is a growing problem observed on all three of the countywide annual counts.

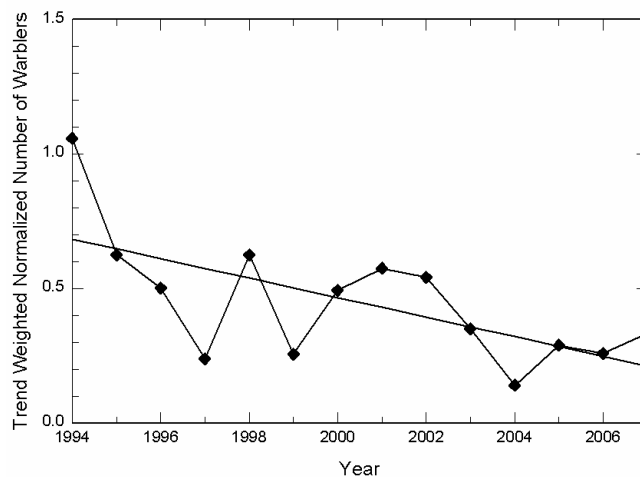
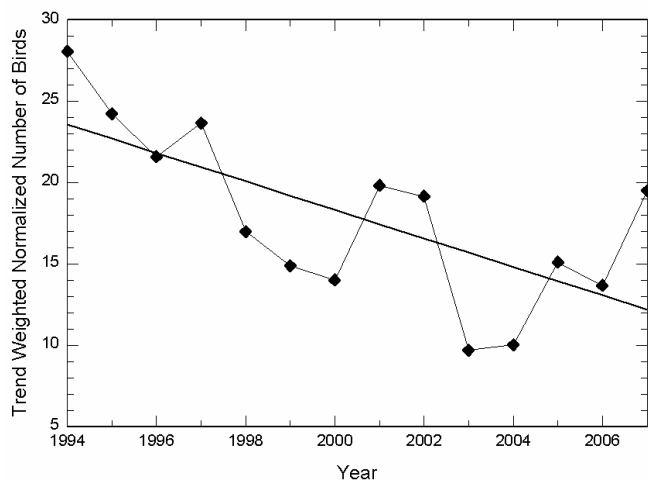
This problem is further reflected in the data from the 14 years of Fall

Counts as shown on the graphics for the number of individual birds and warblers observed countywide.

The accompanying table presents the count data. There were 21 species for which there was only one bird sighted countywide and nine species for which there were only two birds sighted countywide. Species showing moderately high numbers (>500) are Canada Goose 1,077; Rock Pigeon 667; Blue Jay 562; American Robin 606; European Starling 2,712; Northern Cardinal 776; and American Goldfinch 642. New to Fall Count is Common Raven (two birds--one each in Areas 1 and 3).

Randy Beaton, Scott Berglund, **Bill & Karan Blum (Area 4)**, Dennis Coskren, Jane Coskren, **Jeff Culler (Area 2)**, Ralph Cullison III, **Karen Darcy (Area 3 Coordinator)**, Ward Ebert, Erin Eve, Tracy Eve, Tom Feild, John Finedore, Jeff Friedhoffer, **Kevin Heffernan, (Area 3 Coordinator)**, Bill Hill, Gayle Hill, Emy Holdridge, Michael Kerwin, Shashi Lengade, Mike Leumas,

(Fall Count continued on page 7)



HOWARD CO. FALL BIRD COUNT - September 15, 2007

Species / Area No.:	1	2	3	4	5	6	7	Totals	Species / Area No.:	1	2	3	4	5	6	7	Totals
Canada Goose	408	5	59	57	403	65	80	1,077	Veery		1			1		2	4
Mute Swan					1			1	Swanson's Thrush		1				3		4
Wood Duck	3		18	2	1		4	28	Wood Thrush	6	3		1	14	7	10	41
Mallard			15	38	27	8	93	181	American Robin	86	12	73	53	203	24	155	606
Green-winged Teal				4				4	Gray Catbird	35	10	58	102	60	9	76	350
Pied-billed Grebe			1					1	Northern Mockingbird	24	16	12	15	13	23	22	125
Double-crested Cormorant					1			1	Brown Thrasher	1	1	1			2	2	7
Great Blue Heron	6	4	6	6	4	6	10	42	European Starling	490	340	542	377	158	210	595	2,712
Great Egret	1			3	1	1		6	Cedar Waxwing	28	7	104	13	29	8	2	191
Green Heron	3		3	4	1	1	5	17	Blue-winged Warbler					1			1
Black-crowned Night-Heron					1			1	Northern Parula	1		1					2
Black Vulture	99	18	28	46	12	36	10	249	Chestnut-sided Warbler	1		5		1			7
Turkey Vulture	71	36	59	67	12	32	20	297	Magnolia Warbler	2		6	2	2	1	3	16
Osprey	1			2	3	1	2	9	Blk.-thrt'd. Blue Warbler			1		1		1	3
Bald Eagle [ad/im/unk]			1					1	Yel.-rump'd (Myrtle) Warbler		2						2
Northern Harrier				1				1	Blk.-thrt'd. Green Warbler	1		15		1		1	18
Sharp-shinned Hawk	1		3	8	3	1	2	18	Pine Warbler								1
Cooper's Hawk	4	2	9	5	1	2	3	26	Prairie Warbler								1
<i>accipiter species</i>	1		1	8			1	11	Palm Warbler				4				4
Red-shouldered Hawk	5	6	9	12	8	6	12	58	Black-&-white Warbler	1		13	2	5	3	7	31
Broad-winged Hawk	8		10	89	2			109	American Redstart	6		9	3	8	5	3	34
Red-tailed Hawk	7	1	5	8	6	3	3	33	Worm-eating Warbler	1		2		1			4
<i>buteo species</i>				7				7	Ovenbird			1		1	1	2	5
American Kestrel	1	5	8	1	1	1	1	18	Northern Waterthrush			1					1
Merlin	1							1	Common Yellowthroat	20	3	27	8	16	2	19	95
Killdeer	11	1			3		2	17	Hooded Warbler			1		1			2
Lesser Yellowlegs				3				3	Canada Warbler				1				1
Solitary Sandpiper		1	1	2		2		6	Yellow-breasted Chat	1							1
Spotted Sandpiper					1		1	2	<i>warbler species</i>			6		2			8
Least Sandpiper							4	4	Scarlet Tanager	1	1	3					5
Pectoral Sandpiper	2							2	Eastern Towhee	5		20	7	4	1	14	51
Ring-billed Gull				4	3		2	9	Chipping Sparrow	18		14	3	17	1	14	67
Caspian Tern				2				2	Field Sparrow	16		13					29
Rock Pigeon	437	26	117	41	31	3	12	667	Savannah Sparrow	2		2					4
Mourning Dove	98	87	108	72	24	23	76	488	Grasshopper Sparrow	1							1
Yellow-billed Cuckoo			1					1	Song Sparrow	11	7	11	12	3		5	49
Eastern Screech-Owl			1					1	<i>sparrow species</i>	2		2	60				64
Great Horned Owl		1						1	Northern Cardinal	47	35	148	160	128	38	210	766
Barred Owl				1			2	3	Rose-breasted Grosbeak	1							1
Chimney Swift	2	1	10	11		44	2	70	Blue Grosbeak	4		9				2	15
Ruby-throated Hummingbird	7	5	7	9	6	3	1	38	Indigo Bunting	23		23				4	50
Belted Kingfisher	6		7	4	1	1	3	22	Bobolink	2			22				24
Red-bellied Woodpecker	20	11	38	12	28	14	32	155	Red-winged Blackbird		2	5	6			48	61
Downy Woodpecker	12	4	18	13	18	16	35	116	Eastern Meadowlark			2					2
Hairy Woodpecker	3		1		4	5	3	16	Common Grackle							40	40
Northern (Yellow-sh'd) Flicker	7	1	5	4	10	5	11	43	Brown-headed Cowbird	127	1	50					178
Pileated Woodpecker	1	3	4	2	8		4	22	House Finch	14	2	35	12	19	16	29	127
Eastern Wood-Pewee	10	6	13	8	5	5	10	57	American Goldfinch	104	34	203	111	28	56	106	642
Acadian Flycatcher					1		2	3	House Sparrow	60	18	63	29	19	6	170	365
<i>Empidonax species</i>	5		10	3	5	1		24	Area Total Birds:	2,761	954	2,621	2,422	1,786	862	2,486	13,892
Eastern Phoebe	23	5	6	18	2	3	11	68	Area Total Species:	75	49	77	66	70	56	73	115
Great Crested Flycatcher	3		2		1		2	8	Area No.:	1	2	3	4	5	6	7	Totals
Eastern Kingbird	2			1				3	Supplemental Data								
White-eyed Vireo		2	1		2	2		7	Time Start:	7:00 a	7:00 a	7:00 a	6:30 a	5:00 a	7:45 a	6:15 a	5:00 a
Yellow-throated Vireo							1	1	Time Stop:	8:15 p	1:15 p	6:05 p	6:00 p	4:00 p	2:15 p	5:00 p	8:15 p
Warbling Vireo							1	1	Hours on Foot:	26.5	7.5	31.9	19.1	25.8	10.5	27.8	149.1
Red-eyed Vireo	2	1	3		4	1	1	12	Hours by Car:	3.8	2.3	4.8	1.3	1.1	2.0	1.5	16.8
Blue Jay	51	53	105	63	116	33	141	562	Miles on Foot:	12.5	5.0	25.4	14.5	20.3	7.0	24.0	108.7
American Crow	83	82	75	99	49	24	55	467	Miles by Car:	59.0	30.0	58.2	19.0	30.3	25.0	20.0	241.5
Fish Crow	9	1	4	4			5	23	Hours Feeder Watching:	.0	.0	1.0	.0	1.0	.0	.0	2.0
<i>crow species</i>	49	14	105	564	43		23	798	Hours Stationary:	.0	.0	1.0	10.0	1.0	.0	.0	12.0
Common Raven	1		1					2	Hours "Owling":	.0	.0	.0	.0	1.5	.0	.0	1.5
Horned Lark	14							14	Miles "Owling":	.0	.0	.5	.0	3.0	.0	.0	3.5
Tree Swallow				1	2	4		7	Area Code:	1	2	3	4	5	6	7	Totals
Carolina Chickadee	41	22	119	32	67	32	112	425	Total Observers in Area:	6	6	9	6	7	3	11	48
Tufted Titmouse	27	20	42	26	62	26	54	257	Total Parties in Area:	4	2	7	7	5	2	6	33
Red-breasted Nuthatch							1	1	Total Party-Hours (Reg.):	30.3	9.8	36.7	20.4	26.9	12.5	29.3	165.9
White-breasted Nuthatch	12	4	27	11	23	10	16	103	Total Party-Hours (Feeder):			1		1.0	.0		2.0
Carolina Wren	18	7	35	25	29	18	59	191	Total Party-Hours (Station'y):	.0	.0	1.0	10.0	1.0	.0	.0	12.0
House Wren	8		6	2	6	1	2	25	Total Party-Hours (Owling):	.0	.0	.0	.0	1.5	.0	.0	1.5
Blue-gray Gnatcatcher				1	1			2	Total Party-Hours:	30.3	9.8	38.7	30.4	30.4	12.5	29.3	181.4
Eastern Bluebird	35	25	28	16	9	7	8	128	Total Party-Miles:	71.5	35.0	84.1	33.5	53.6	32.0	44.0	353.7
Area No.:	1	2	3	4	5	6	7	Totals	Area No.:	1	2	3	4	5	6	7	Totals

HOWARD COUNTY BIRD CLUB FALL TRIPS

BY BONNIE OTT

FIELD TRIPS are a great way to improve birding skills, explore new places and meet other birders. Plan to arrive at the meeting area with enough time to be prepared to begin birding at the designated time. Carpooling is encouraged. Come prepared with appropriate footwear and gear (the trip description will offer advice). The leader has the option to cancel due to inclement weather. Directions for trips not on ADC maps may be found on the howard-birds.org website. If you have questions, call or e-mail the trip leader at the number/ address listed in the trip description, or field trip coordinator, Bonnie Ott; bonnieott@verizon.net

To help make trips successful please stay behind the leader, keep talking to a minimum and stay with the group. Don't hesitate to ask questions or alert the leader to something you've spotted. Howard Bird Club members will be given priority on trips that are limited by number of participants. No pets.

ALPHA RIDGE PARK AND LANDFILL

Nov. 3, Sat. 8:00 a.m. (half day)
Meet at Alpha Ridge Park, 1/2 mile west of Marriottsville Rd. on Md 99. Moderate to difficult walking through the fields looking for lingering sparrows and early winter arrivals. The landfill has the best possibility of hosting rarities. Possibility of walking through tall wet grasses. Boots recommended. Facilities at the park. *Leader- Ralph Cullison 410-442-2181.*

CENTENNIAL PARK

Nov. 4, Sun. 8:00 a.m. (2-3 hours)
Meet at West parking lot on Centennial Lane. (Don't forget daylight savings time ends.) Easy walking on paved path around Centennial Lake. Woodlands, fields and water host a wide variety of species. Great view of the sky for flyovers. Early waterfowl, lingering migrants likely. Facilities available. *Leader- Joe Byrnes 410-730-5329.*

HOWARD WATERFOWL SEARCH

Nov. 10, Sat. 8:00 a.m. to 2:00 p.m.
Meet at Broken Land Parkway parking lot at Lake Elkhorn. Plan to visit the Columbia lakes to search for gulls, ducks, grebes, loons and

other waterfowl. Easy walking involved. Plan to carpool. Bring lunch and drinks. Scopes helpful. Facilities available. *Leader- Stan Arnold- 410-428-7567.*

CENTENNIAL PARK

Nov. 11, Sun. 8:00 a.m. (2-3 hours)
Meet at West parking lot on Centennial Lane. Easy walking on paved path around Centennial Lake. Woodlands, fields and water host a wide variety of species. Great view of the sky for flyovers. Facilities available. *Leaders- Kevin Heffernan and Karen Darcy 410-418-8731.*

CENTENNIAL PARK

Nov. 18, Sun. 8:00 a.m. (2-3 hours)
Meet at West parking lot on Centennial Lane. Easy walking on paved path around Centennial Lake. Woodlands, fields and water host a wide variety of species. Great view of the sky for flyovers. Facilities available. *Leaders- Dave and Maureen Harvey 410-795-3117.*


CENTENNIAL PARK

Nov. 25, Sun. 8:00 a.m. (2-3 hours)
Meet at West parking lot on Centennial Lane. Easy walking on paved path around Centennial Lake. Woodlands, fields and water host a wide variety of species. Great view of

the sky for flyovers. Facilities available. *Leader- Bonnie Ott 410-461-3361.*

BLACKWATER REFUGE

Dec. 1, Saturday 6:30 a.m. (All day)
Meet at 32/Broken Land Parkway park-and-ride west lot. We will bird the Choptank River Bridge before going to the refuge. Targeting waterfowl and wintering raptors with the likelihood of Rough-legged Hawk and Short-eared Owl. The spectacle of huge flocks of Snow and Canada geese is worth the trip! Pack lunch, snacks and beverages. Scopes useful. Facilities at some stops. *Leader- Stan Arnold 410-428-7567.*

 = Great for beginning birders

Holiday Shopping?

When doing your holiday shopping, why not consider a few purchases from the club's bookstore? If you are searching for a particular title, contact **Ann Marie Raterman** (301-847-1958) and ask if she can get you that perfect item.

(*Fall Count continued from page 4*)

Felicia Lovelett, Nancy Magnusson, Grazina McClure, **Mike McClure (County Co-ordinator)**, John McKitterick, Elayne Metter, Jeff Metter, Barry Miller, Carol Newman, Daryl Olson, **Bonnie Ott (Area 6)**, Karla Pearce, Ron Polniaszek, Susan Polniaszek, **Kurt Schwarz (Area 5)**, Bob Solem, Jo Solem, Michelle Stewart, **Chuck Stirrat, (County Co-ordinator)**, Tom Strikwerda, **Eva Sunell, (Area 7)**, Dick Tufts, Kate Tufts, June Tveekrem, **Mark Wallace (Area 1)**, Michelle Wright. **Lastly, a very special thanks to Don and Martha Waugh who hosted the evening tally.**

Plan now to join us on a future seasonal count and, if possible, attend the tally as well. Next year the 2008 Fall Count will be held on the 3rd Saturday of September which will be the 20th.

BOARD OF DIRECTORS MEETINGS

Board meetings are held the fourth Thursday of the month at 7:30 p.m., unless otherwise noted, at the home of the board member listed. If directions are required, please call the hosting board member.

November 15, Thursday (Note: This is the **third** Thursday.)
Amanda Witt
6134 Starburn Path
Columbia, MD 21045
(410) 290-0460

December: No board meeting

WARBLERS ON A PLATTER BY KURT SCHWARZ

Wouldn't it be wonderful to have all those warblers that we rarely encounter in Howard County at your fingertips? Or to have those elusive thrushes walk right up you, without having to worry if one MIGHT be a Bicknell's? Woodcock in plain sight? Philadelphia Vireos that pose for as long as you might like? I've seen such a place, and it's not too far away. Crane Creek State Park/Magee Marsh Wildlife Area is a migrant trap on the south shore of Lake Erie that is everything Point Pelee is cracked up to be, and you don't need a passport.

I had the opportunity to bird Crane Creek for six days in mid-May in 2007. I had been hearing about it for several years from a Montgomery County friend, and this year decided to invite myself along. It was everything she said it was, and more.

I arrived roughly at 3:00 p.m. the first afternoon, and was treated to Chestnut-sided and Bay-breasted warblers at arms' length. Prior to this point, I had seen, or heard, Bay-breasteds maybe four or five times in my life. I saw them every day, often within reach. And THEN, there was a Mourning Warbler, giving good looks. In three hours, I encountered 16 species of warblers, and had seen Swainson's and Gray-cheeked thrushes, as well as Veery. By the time I left, five days later, I'd seen 25 warbler species. Had I gotten there the day before, I might have added two or three more. Earlier that week, over 30 species were reported, including one, rather suspect, report of Kirtland's Warbler. A female Kirtland's, however, was

seen there on May 13, 2006.

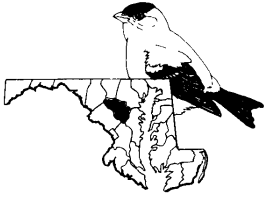
I saw Mourning, Wilson's, and Canada warblers every day. Some of the Canadas were also just out of reach. All the eastern thrushes were present, less Bicknell's. American Woodcock and Eastern Screech-Owl could be seen virtually every day.

Side trips produced hundreds of American Golden-Plovers, a Black Tern, a singing Sedge Wren, and one, possibly two Yellow-headed Blackbirds. Ottawa National Wildlife Refuge is nearby, as are some other parks and wildlife areas. In addition, Crane Creek/Magee Marsh can produce shorebirds.

Most days, the birds stayed active all day long; however, as the week went on and temperatures climbed, the afternoons could get a little slow. There is a boardwalk, so that you can bird the area in sneakers. Note that the boardwalk can get crowded on the weekends.

Reasonably-priced accommodations can be found nearby in Oregon, Ohio, about 20 minutes away. From central Maryland, the drive took about eight hours, with a lunch break.

While there, I encountered quite a few Montgomery Countians, some Anne Arundelians, and even one gentleman from the Eastern Shore, who told me he wandered down from Point Pelee a decade ago, as the action was slow, and hadn't been back to Point Pelee since. Frankly, I don't see much point in venturing all the way to Canada after visiting Crane Creek/Magee Marsh.



HOWARD COUNTY BIRD CLUB

Chapter of the Maryland Ornithological Society

6007 Flywheel Court

Columbia, MD 21044

ADDRESS SERVICE SUGGESTED

NON-PROFIT ORG

U.S. POSTAGE

PAID

COLUMBIA, MD

PERMIT NO. 452

November/December 2007 - Inside This Issue:

Club Meetings

Middleton Evans' Presentation

Fall Count Results

Holiday Shopping

Board of Directors Meetings

Summer Bird Records

Volunteers Needed

Fall Field Trips

Warblers on a Platter

MOS Scholarships

MOS SCHOLARSHIPS FOR MARYLAND TEACHERS AND PARK RANGERS!

BY TOM STRIKWERDA

Who in your circle of acquaintances might be good candidates for an MOS scholarship or might know someone else to nominate? Flip through your mental Rolodexes and see if you can help identify a prime applicant. Know someone who is a teacher in Maryland? How about a park ranger or camp counselor?

MOS sponsors nature educators every summer to attend a one week Audubon workshop. Each year MOS gives approximately ten awards to people for whom

nature education is part of their careers – typically teachers, camp counselors, and park rangers. Scholarships, each valued at about \$1,200, cover tuition, room and board at the weeklong camps, in several states. For more information about how to apply, eligibility, workshop descriptions or other questions, please see www.mdbirds.org (the MOS website), select “education” and then “scholarships,” or contact the scholarship chairperson, Tom Strikwerda, at (301) 942-2841, or tom.strikwerda@verizon.net.